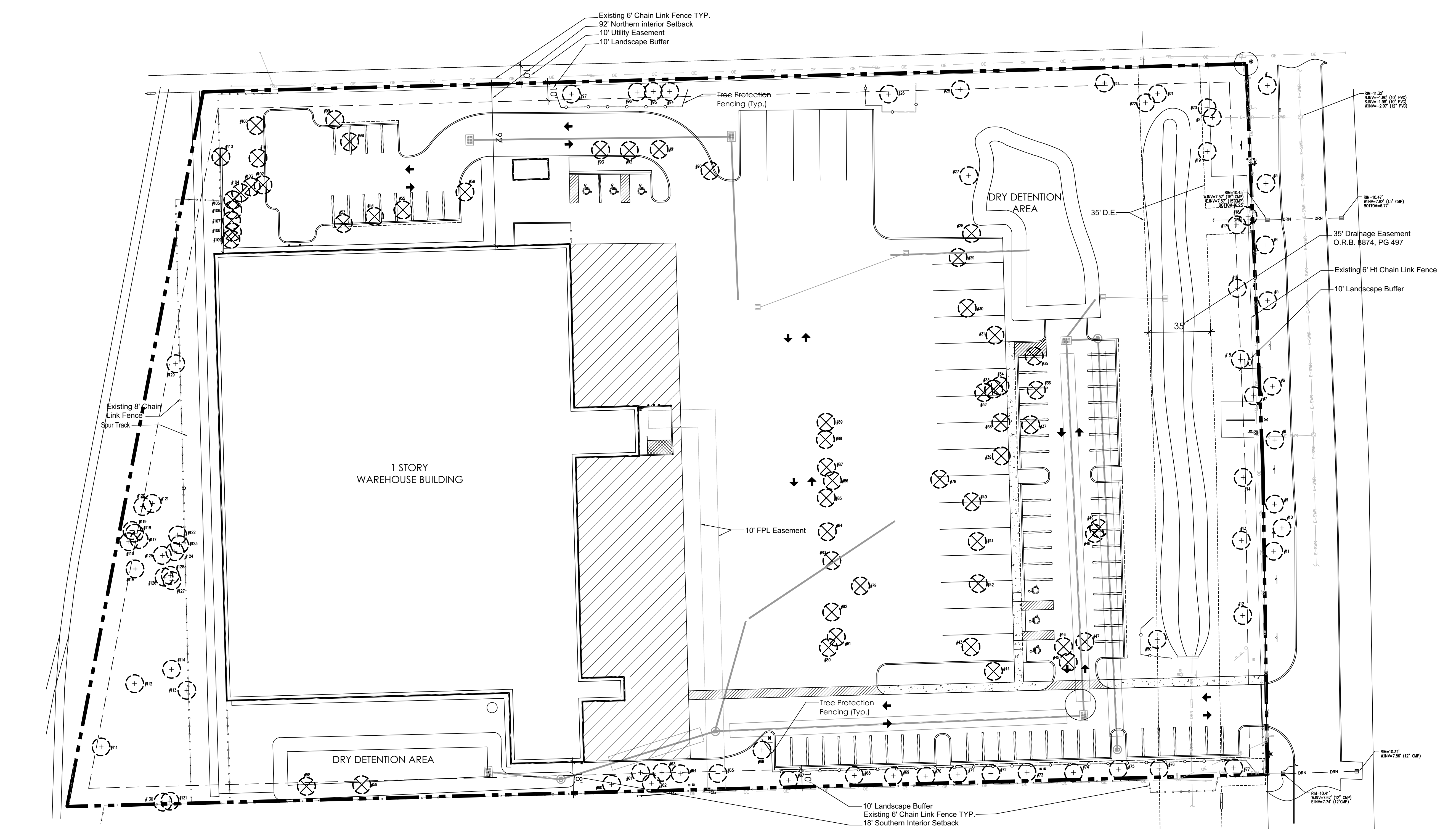


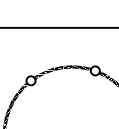
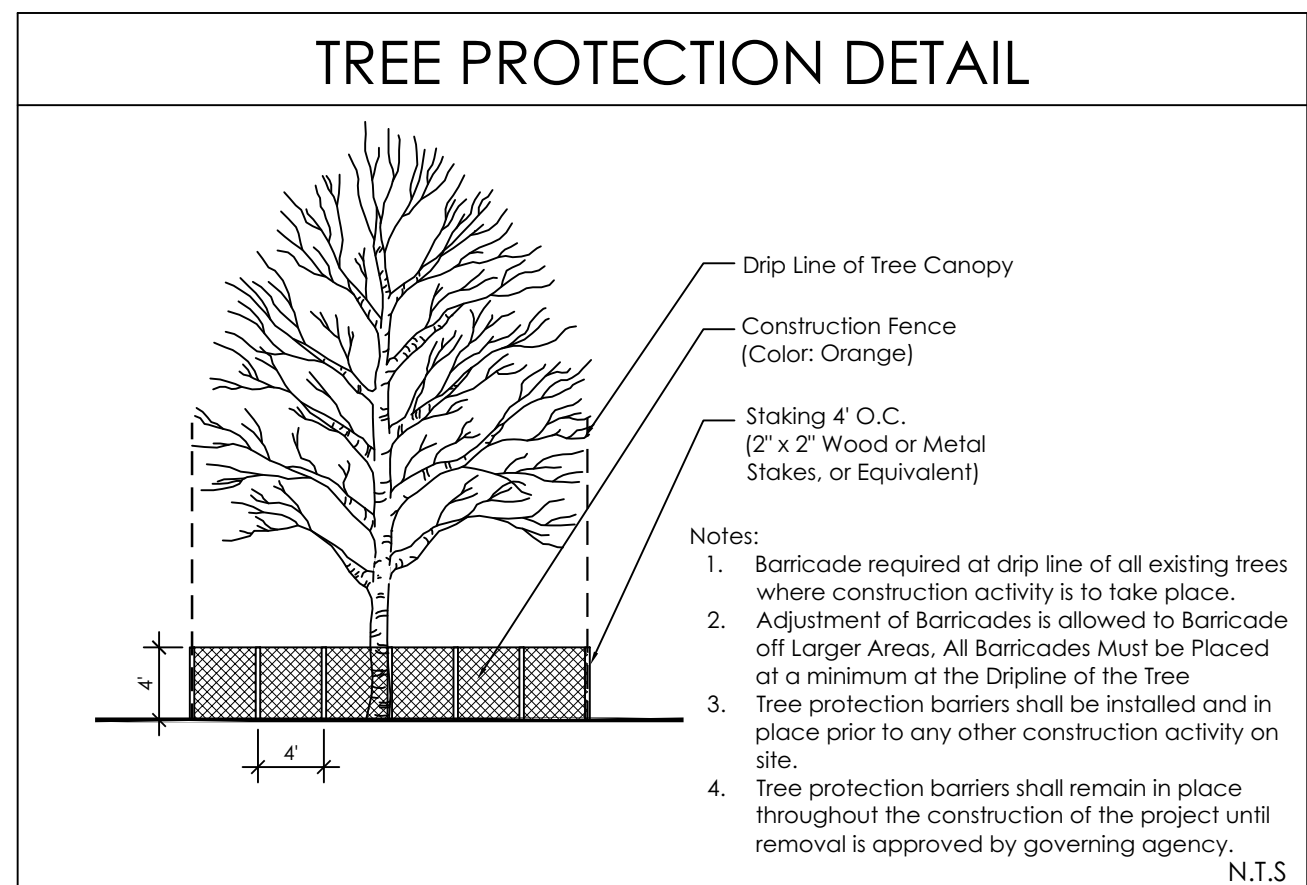


TREE TABLE				
TREE NO.	SPECIES	DIAMETER	CLEAR TRUNK	DISPOSITION
1	UNKNOWN	8"	N/A	REMAIN
2	CABBAGE PALM	14"	S	REMAIN
3	UNKNOWN	6"	N/A	REMAIN
4	UNKNOWN	4"	N/A	REMAIN
5	UNKNOWN	4"	N/A	REMAIN
6	UNKNOWN	4"	N/A	REMAIN
7	GUANO LIMBO	12"	N/A	REMAIN
8	UNKNOWN	4"	N/A	REMAIN
9	UNKNOWN	4"	N/A	REMAIN
10	UNKNOWN	4"	N/A	REMAIN
11	UNKNOWN	4"	N/A	REMAIN
12	UNKNOWN	4"	N/A	REMAIN
13	UNKNOWN	5"	N/A	REMAIN
14	UNKNOWN	5"	N/A	REMAIN
15	UNKNOWN	3"	N/A	REMAIN
16	UNKNOWN	3"	N/A	REMAIN
17	UNKNOWN	3"	N/A	REMAIN
18	GUANO LIMBO	12"	N/A	REMAIN
19	OAK	4"	N/A	REMAIN
20	GUANO LIMBO	12"	N/A	REMAIN
21	CABBAGE PALM	14"	S	REMAIN
22	CABBAGE PALM	14"	S	REMAIN
23	UNKNOWN	18"	N/A	REMAIN
24	UNKNOWN	18"	N/A	REMAIN
25	OAK	10"	N/A	REMAIN
26	OAK	6"	N/A	REMAIN
27	UNKNOWN	6"	N/A	REMAIN
28	RED MAPLE	24"	N/A	REMOVE
29	P. TABERBIA	14"	8	REMOVE
30	P. TABERBIA	14"	N/A	REMOVE
31	Y. TABERBIA	20"	N/A	REMOVE
32	CABBAGE PALM	14"	8	REMOVE
33	P. TABERBIA	6"	N/A	REMOVE
34	RED MAPLE	14"	N/A	REMOVE
35	RED MAPLE	12"	25	REMOVE
36	RED MAPLE	6"	N/A	REMOVE
37	RED MAPLE	6"	N/A	REMOVE
38	P. TABERBIA	10"	N/A	REMOVE
39	RED MAPLE	6"	N/A	REMOVE
40	QUEEN PALM	14"	18	REMOVE
41	RED MAPLE	4"	N/A	REMOVE
42	RED MAPLE	4"	N/A	REMOVE
43	LIVE OAK	24"	N/A	REMOVE
44	LIVE OAK	18"	N/A	REMOVE
45	CABBAGE PALM	12"	18	REMOVE
46	CABBAGE PALM	12"	18	REMOVE
47	LIVE OAK	18"	N/A	REMOVE
48	CABBAGE PALM	12"	25	REMOVE
49	CABBAGE PALM	12"	25	REMOVE
50	UNKNOWN	14"	N/A	REMAIN
53	LIVE OAK	6"	N/A	REMAIN
54	LIVE OAK	6"	N/A	REMAIN
55	LIVE OAK	6"	N/A	REMAIN
56	BLACK OLIVE	18"	N/A	REMOVE
58	LIVE OAK	6"	N/A	REMAIN
59	LIVE OAK	3"	N/A	REMOVE
60	CABBAGE PALM	12"	18	REMOVE
61	CABBAGE PALM	12"	18	REMOVE
62	CABBAGE PALM	12"	25	REMOVE
63	CABBAGE PALM	12"	25	REMOVE
64	UNKNOWN	12"	N/A	REMAIN
65	UNKNOWN	12"	N/A	REMAIN
66	OAK	6"	N/A	REMAIN
67	UNKNOWN	4"	N/A	REMAIN
68	UNKNOWN	16"	N/A	REMAIN
69	UNKNOWN	2"	N/A	REMAIN
70	UNKNOWN	4"	N/A	REMAIN
71	UNKNOWN	4"	N/A	REMAIN
72	UNKNOWN	4"	N/A	REMAIN
73	UNKNOWN	4"	N/A	REMAIN
74	UNKNOWN	4"	N/A	REMAIN
75	UNKNOWN	4"	N/A	REMAIN
76	UNKNOWN	4"	N/A	REMAIN
77	UNKNOWN	18"	N/A	REMAIN
78	LIVE OAK	6"	N/A	REMOVE
79	LIVE OAK	6"	N/A	REMOVE
80	CABBAGE PALM	12"	20	REMOVE
81	CABBAGE PALM	12"	17	REMOVE
82	CABBAGE PALM	14"	11	REMOVE
83	Y. TABERBIA	14"	N/A	REMOVE
84	Y. TABERBIA	14"	N/A	REMOVE
85	CABBAGE PALM	14"	8	REMOVE
86	CABBAGE PALM	12"	18	REMOVE
87	CABBAGE PALM	10"	15	REMOVE
88	CABBAGE PALM	10"	18	REMOVE
89	CABBAGE PALM	10"	25	REMOVE
90	LIVE OAK	6"	N/A	REMOVE
91	SLIGHTWOOD	4"	N/A	REMOVE
92	SLIGHTWOOD	4"	N/A	REMOVE
93	SLIGHTWOOD	4"	N/A	REMOVE
94	CABBAGE PALM	12"	15	REMAIN
95	CABBAGE PALM	12"	13	REMAIN
96	CABBAGE PALM	12"	17	REMAIN
97	UNKNOWN	18"	N/A	REMOVE
98	LIVE OAK	6"	N/A	REMOVE
99	LIVE OAK	6"	N/A	REMOVE
100	LIVE OAK	7"	N/A	REMOVE
101	LIVE OAK	5"	N/A	REMOVE
102	ARECA PALM	CLUSTER	4	REMOVE
103	ARECA PALM	CLUSTER	4	REMOVE
104	ARECA PALM	CLUSTER	4	REMOVE
105	ARECA PALM	CLUSTER	4	REMOVE
106	ARECA PALM	CLUSTER	6	REMOVE
107	ARECA PALM	CLUSTER	6	REMOVE
108	ARECA PALM	CLUSTER	6	REMOVE
109	ARECA PALM	CLUSTER	6	REMOVE
110	UNKNOWN	18"	N/A	REMOVE
111	UNKNOWN			
112	UNKNOWN	12"	N/A	REMAIN
113	UNKNOWN	24"	N/A	REMAIN
114	CABBAGE PALM	18"	12	REMAIN
115	UNKNOWN	10"	N/A	REMAIN
116	UNKNOWN	10"	N/A	REMAIN
117	UNKNOWN	10"	N/A	REMAIN
118	UNKNOWN	12"	N/A	REMAIN
119	UNKNOWN	12"	N/A	REMAIN
120	UNKNOWN	18"	N/A	REMAIN
121	UNKNOWN	24"	N/A	REMAIN
122	UNKNOWN	14"	N/A	REMAIN
123	UNKNOWN	10"	N/A	REMAIN
124	UNKNOWN	12"	N/A	REMAIN
125	UNKNOWN	12"	N/A	REMAIN
126	UNKNOWN	16"	N/A	REMAIN
127	UNKNOWN	10"	N/A	REMAIN
128	UNKNOWN	6"	N/A	REMAIN
129	UNKNOWN	6"	N/A	REMAIN
130	UNKNOWN	14"	N/A	REMAIN
131	UNKNOWN			
132	UNKNOWN			



TREE SUMMARY	
Category	Total Trees
Trees to Remain	60
Palms to Remain	11
Removed Trees	32
Removed DBH (Inches)	305
Removed Palms	23

TREE DISPOSITION KEY	
	EXISTING TREE TO REMAIN
	EXISTING TREE TO BE REMOVED
	<p>Tree Barricade</p> <p>To be Placed at Dripline per Tree Protection Detail</p>



VEGETATION NOTES

1. Tree protection barriers shall be installed and in place prior to any other construction activity on site. Tree protection barriers shall remain in place throughout the construction of the project until removal is approved by governing agency.
2. During land clearing and construction, protective barriers shall be maintained around all trees / palms or groups of trees / palms to be protected. The movement of equipment or the storage of equipment, materials, and placement of debris or fill within protective barriers is prohibited.
3. A permit to remove trees and palms must be applied for with the governing agency prior to tree removal.
4. All relocated trees and palms shall be staked and guyed as indicated in the details.
5. Hurricane cut all Sabals prior to transplant.
6. All transplanted trees must be transplanted using best industry standards.
7. Provide irrigation to transplanted trees or trees within holding areas to ensure survivorship.
8. Vegetation to be preserved shall be barricaded with a 3-foot high plastic mesh (orange) supported by 5-foot long rebar or 2" x 2" wood stakes or equivalent.
9. Vegetation to be preserved at a lower final grade may be protected with a 24-inch high silk fence around the preserve area or Vegetation with the addition of the 3-foot high plastic mesh, if needed.
10. If hand clearing is necessary within the preserve area or under the Vegetation canopy, Vegetation to be preserved can initially be delineated by plastic ribbon affixed to survey stakes (to avoid putting up and taking down fencing) and then protected with either plastic mesh and/or the silk fence.
11. Vegetation to be relocated can usually be delineated by plastic ribbon affixed to survey stakes unless their relocation is delayed due to root pruning. If root pruning is required, the Vegetation shall be protected with either plastic mesh and/or silk fence.

